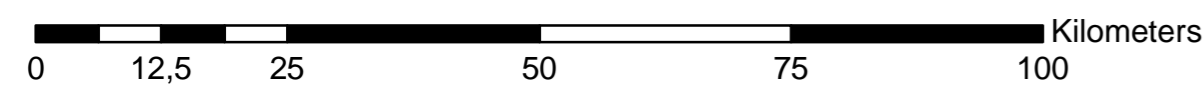
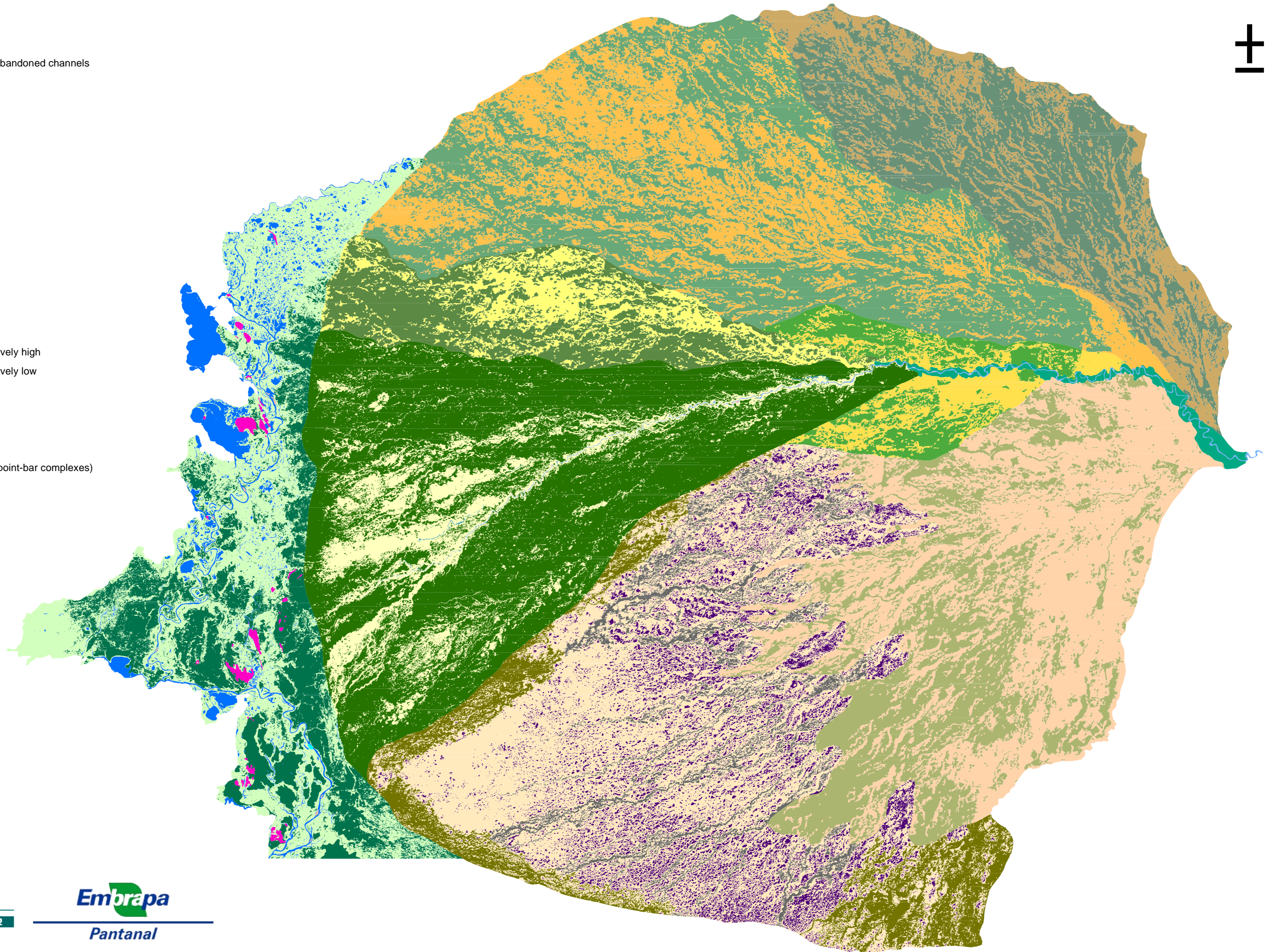


# Geomorphological map of the central Pantanal (south-western Brazil)

## Legend

- alluvial fan, water (channels)
- alluvial fan, active lobe, secondary channels / abandoned channels
- alluvial fan, active lobe, mid-channel bars
- alluvial fan, active lobe, alluvial ridges
- alluvial fan, active lobe, floodplain
- alluvial fan, confined floodplain
- alluvial fan, north-western lobe, alluvial ridges
- alluvial fan, north-western lobe, alluvial plains
- alluvial fan, central lobe, alluvial ridges
- alluvial fan, central lobe, alluvial plains
- alluvial fan, northern lobe, alluvial ridges
- alluvial fan, northern lobe, alluvial plains
- alluvial fan, north-eastern lobe, alluvial ridges
- alluvial fan, north-eastern lobe, alluvial plains
- alluvial fan, south-eastern lobe, alluvial ridges
- alluvial fan, south-eastern lobe, alluvial plains
- alluvial fan, southern lobe, alluvial plains - relatively high
- alluvial fan, southern lobe, alluvial plains - relatively low
- alluvial fan, southern lobe, drainage system
- alluvial fan, southern lobe, seasonal ponds
- axial floodplain, water (channels, lakes)
- axial floodplain, mid-channel bars
- axial floodplain, alluvial ridges (natural levees, point-bar complexes)
- axial floodplain, floodbasins
- isolated bedrock hills



Cartography: Bart Makaske (bart.makaske@wur.nl), Michiel van Eupen, Wim Nieuwenhuizen (Alterra) and Carlos Padovani (Embrapa-Pantanal)